



Graduate Scholarship & Emergency Aid Support

At A Step Beyond, we see a bright future for the students we serve, and our goal is that each one will pursue meaningful college and career paths after graduating from high school. Through their time in our programs, students say they grow in confidence, strength, and happiness while developing a learning mindset.

At the same time, we know many of our youth face financial barriers in following their chosen college and career paths. To learn more about our Student Scholarship, Donor Pledge Scholarship, and Emergency Aid Funds, contact James Wright, CEO, at jwright@a-step-beyond.org.

Student Scholarship Fund

You can help provide support for students to pursue college and career pathways.

The Fund

A Step Beyond created our Student Scholarship Fund to support the ongoing education of individuals who participated in our programs by filling the gaps in financial assistance that our students may experience as they enter college, certificate programs, or trade schools.

How It Works

A Step Beyond (ASB) holds a non-endowment agency fund at the Rancho Santa Fe Foundation for the purpose of providing scholarships to deserving ASB students. Scholarship recipients are selected through an online application process and a review by ASB staff and our Board's Scholarship Advisory Committee. Scholarships will provide up to \$2,500 per year for the selected student recipients for up to five years, and will be used for specified expenses including tuition, books, student housing, food, school supplies, and other educational fee requirements.

|| *I want to become a lawyer and a professional dancer. I know that to get there, I will have more ups and downs, but because of my experience with A Step Beyond I know that I can **overcome** those obstacles."*

–Jazmine H., ASB Student

- It is estimated that in 2019, only 13% of individuals from low-income families attained a bachelor's degree by age 24. For high-income families, an estimated 62% of individuals attained a bachelor's degree by age 24.*
- The maximum Federal Pell Grant covered 68 percent of average college costs in 1975–76 but only 25 percent of average college costs in 2018–19.*

*http://pellinstitute.org/downloads/publications-Indicators_of_Higher_Education_Equity_in_the_US_2021_Historical_Trend_Report.pdf



Emergency Aid Fund

You can help give students the financial security they need to achieve their career goals.

The Fund

A Step Beyond created our Emergency Aid Fund to help our graduates complete their higher education by resolving unexpected, time-sensitive financial emergencies which, if not quickly addressed, could cause them to drop out of their chosen college, trade school, or certificate programs.

How It Works

A Step Beyond (ASB) holds a non-endowment agency fund at the Rancho Santa Fe Foundation for the purpose of defraying the costs of unexpected, time-sensitive financial emergencies experienced by our graduates. Individuals who experience a financial crisis may submit a one-page application to the organization on a rolling basis. These applications are reviewed by ASB staff, approved by the CEO, and reported to the Board of Directors. Emergency Aid Funds will provide up to \$1,500 per year for students enrolled in an accredited college, certificate, or trade school program, and will be used for specified emergency expenses such as housing, utilities, food, clothing, emergency travel to home or school, school supplies, books, laptop computers, or other development opportunities.

- 60 percent of American households experienced a financial shock, such as a loss of income, family illness, or car repair over a 12-month period**
- The median lower-income household's most expensive shock cost the equivalent of 31 days of income, three times that of a high-income household.**

**https://www.pewtrusts.org/~media/assets/2015/10/emergency-savings-report-1_artfinal.pdf



A Step Above Donor Pledge Scholarship Fund

You can help give high-achieving students the financial support they need in order to advance their education and career.

The Fund

A Step Beyond established the A Step Above Donor Pledge Scholarship Fund to provide scholarships that inspire high-achieving, high-needs students to pursue further education upon high school graduation. This includes support “in a meaningful amount” for students who may need additional assistance, such as those attending out-of-state, private schools or facing other challenges.

How It Works

A Step Beyond (ASB) holds a non-endowment agency fund at the Rancho Santa Fe Foundation for the purpose of providing a five-year commitment to high-achieving graduates in college with a GPA of 3.7 or higher, who are pursuing a STEAM degree, and have completed A Step Beyond’s program. Scholarship recipients are selected through an online application process and a review by ASB staff and our Board’s Scholarship Advisory Committee. Donors pledge \$50,000, payable in one lump sum, or in five subsequent year payments, in support of an individual scholarship recipient in the amount of \$10,000 per year. Scholarships will be used for specified expenses including tuition, books, student housing, food, school supplies, and other educational fee requirements.

- Students from the lowest income quartile who received financial aid were most likely to graduate within six years (59%) compared to their peers who did not receive aid (47%)*
- Low income students who received adequate financial aid were 50% less likely to drop out during their first year compared to those who did not receive sufficient aid.**

*The Pell Institute. (2015). Indicators of Higher Education Equity in the United States: 45 Year Trend Report. Retrieved from: <https://pellinstitute.org/indicators>

**American Council on Education. (2019). Race and Ethnicity in Higher Education: A Status Report. Retrieved from <https://www.equityinhighered.org/resources/report>



Ways to Give

There are a variety of ways to donate to our Funds:

Online

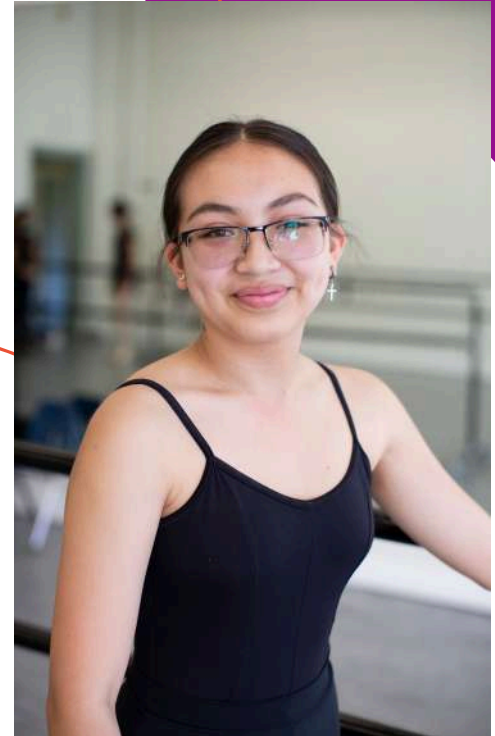
Please visit a-step-beyond.org/alumni for directions and a link to the online donation portals for each of these Funds at the Rancho Santa Fe Foundation. Donors can make one-time and recurring gifts.

By Check

Donations to the Student Scholarship Fund, Emergency Aid Fund, or A Step Above Donor Pledge Scholarship Fund can be mailed directly to: Rancho Santa Fe Foundation, PO Box 811, Rancho Santa Fe, CA 92067. Checks should be made out to "the Rancho Santa Fe Foundation." Please write "A Step Beyond" and which Fund you wish to donate to in the memo line.

Stock & Wire Transfers

If you would like to transfer stock or make a direct wire transfer, please contact us for the broker instructions, as well as the account and routing details.



[A Step Beyond] brings a new generation of students closer to college, to their dream job[s], to be successful in life, and every kid deserves that."

-Stephanie P., ASB Graduate

► LEARN MORE & MAKE A CONTRIBUTION

James Wright, CEO

jwright@a-step-beyond.org

808.283.4457